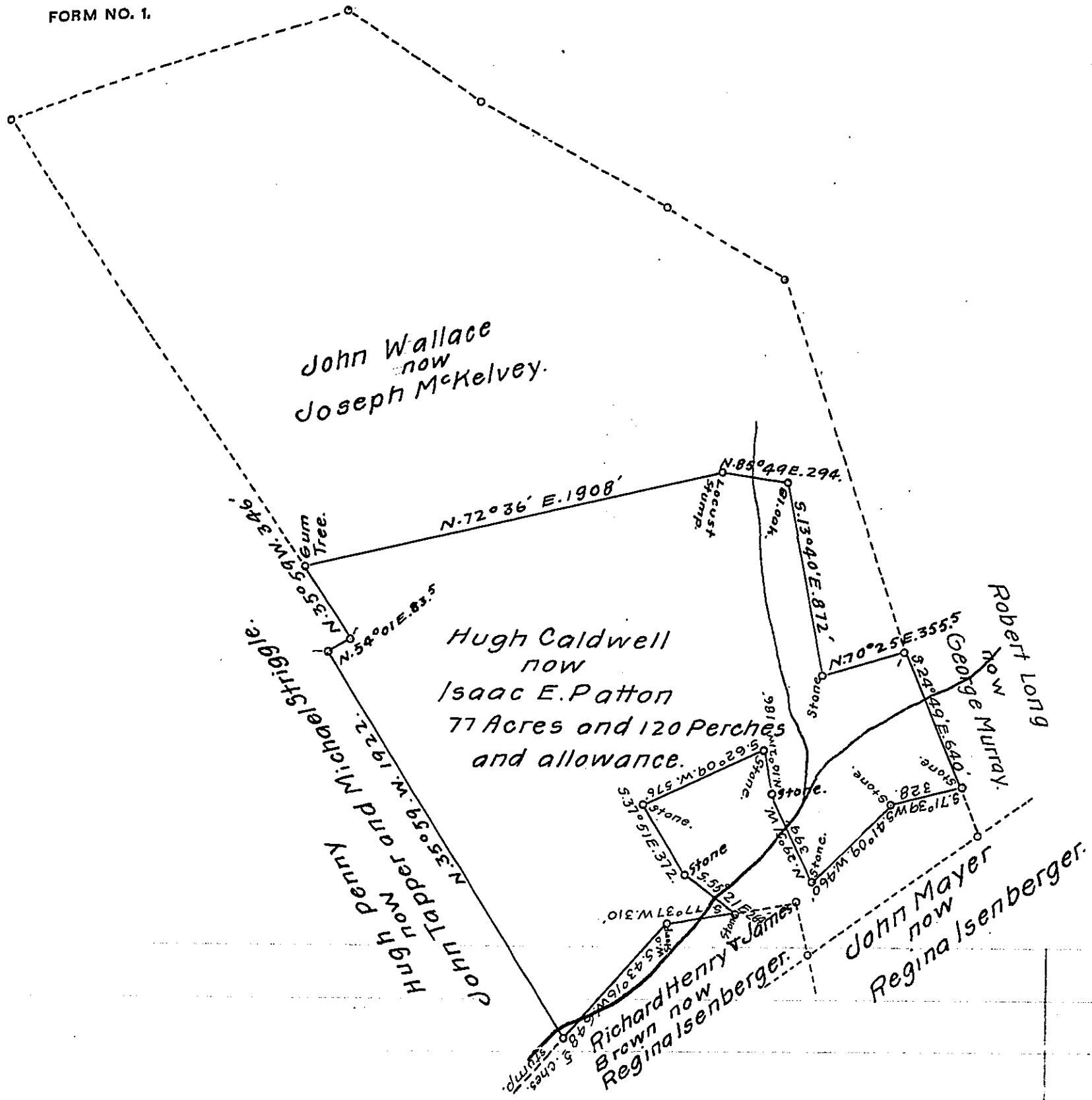


W



A Draft of a tract of land situated in the Township of Martic and County of Lancaster, containing Seventy Seven acres, one hundred & twenty perches and allowance of six percent for roads, etc. Surveyed for Isaac E. Patton the 19th. day of March 1913, it being part of a larger tract containing 195 acres, 33 perches and allowance, originally surveyed in pursuance of a warrant granted to Hugh Caldwell dated the 29th. day of March, 1785

To Hon. Henry Houck,
Secretary of Internal Affairs. }

Alfred Wood,
County Surveyor.

IN TESTIMONY that the above is a copy of the original remaining on file in the Department of Internal Affairs of Pennsylvania, made conformably to an Act of Assembly approved the 16th day of February, 1833, I have hereunto set my Hand and caused the Seal of said Department to be affixed at Harrisburg, this twenty second day of May, 1914.

Henry Houck
Secretary of Internal Affairs.